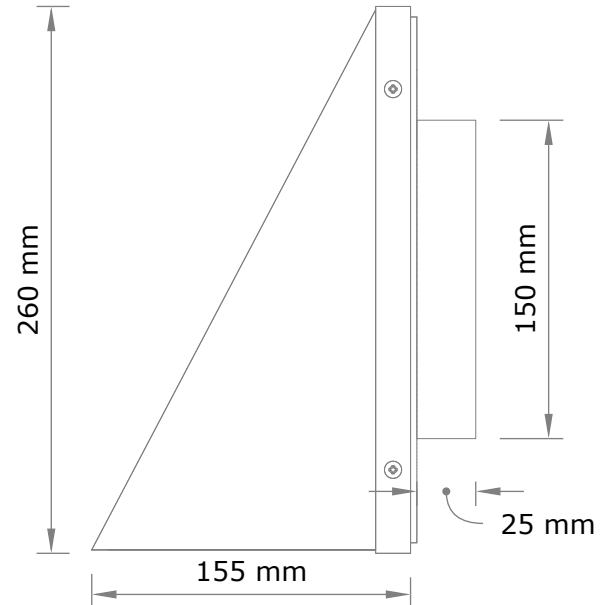


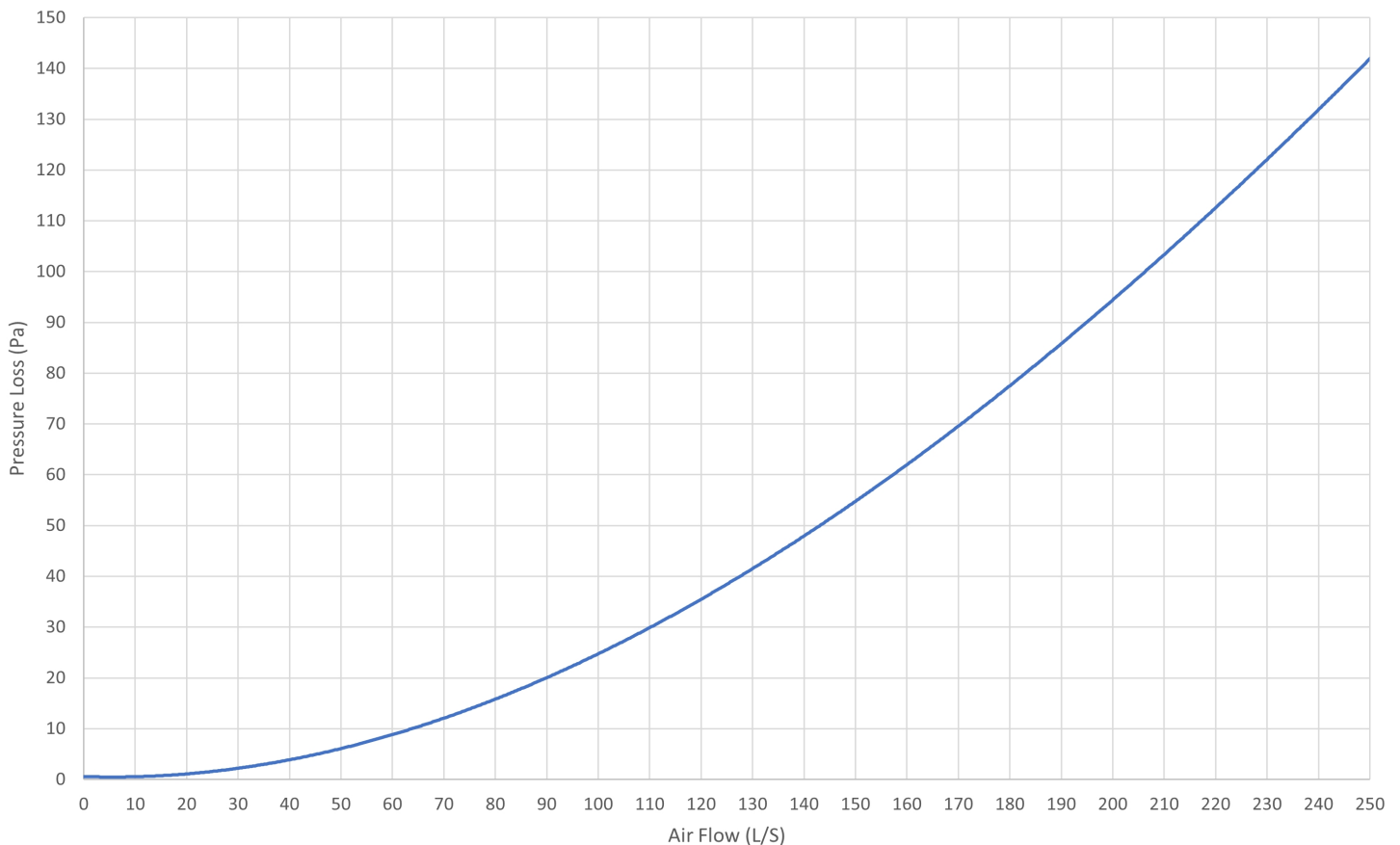
VENTÜER TECHNICAL DATA SHEET

The Ventüer aluminium ventilation cowl with insect mesh is designed for use as either an intake or exhaust façade vent. Constructed from high quality marine-grade powdercoated aluminium and fitted with a compressible EDPM foam rubber backing seal that provides excellent weather protection.

Available in multiple sizes and colours.



Airflow Performance - 150mm Aluminium Cowl with Insect Mesh



Ventilation Cowl

150mm Aluminium
with Insect Mesh



VENTÜER
High-Performance Building Ventilation

P: +64 9 973 3616
W: ventuer.co.nz
© 2019 All rights reserved

Scale:

Date:

NTS
25/09/2023

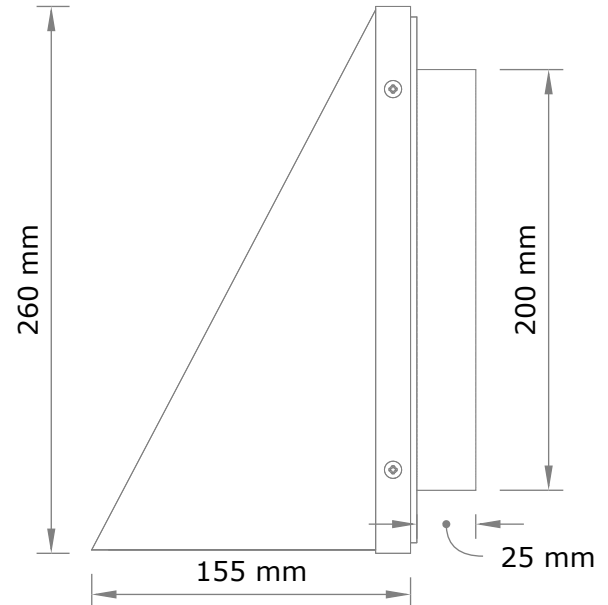
LFCAM-150

Ver.1

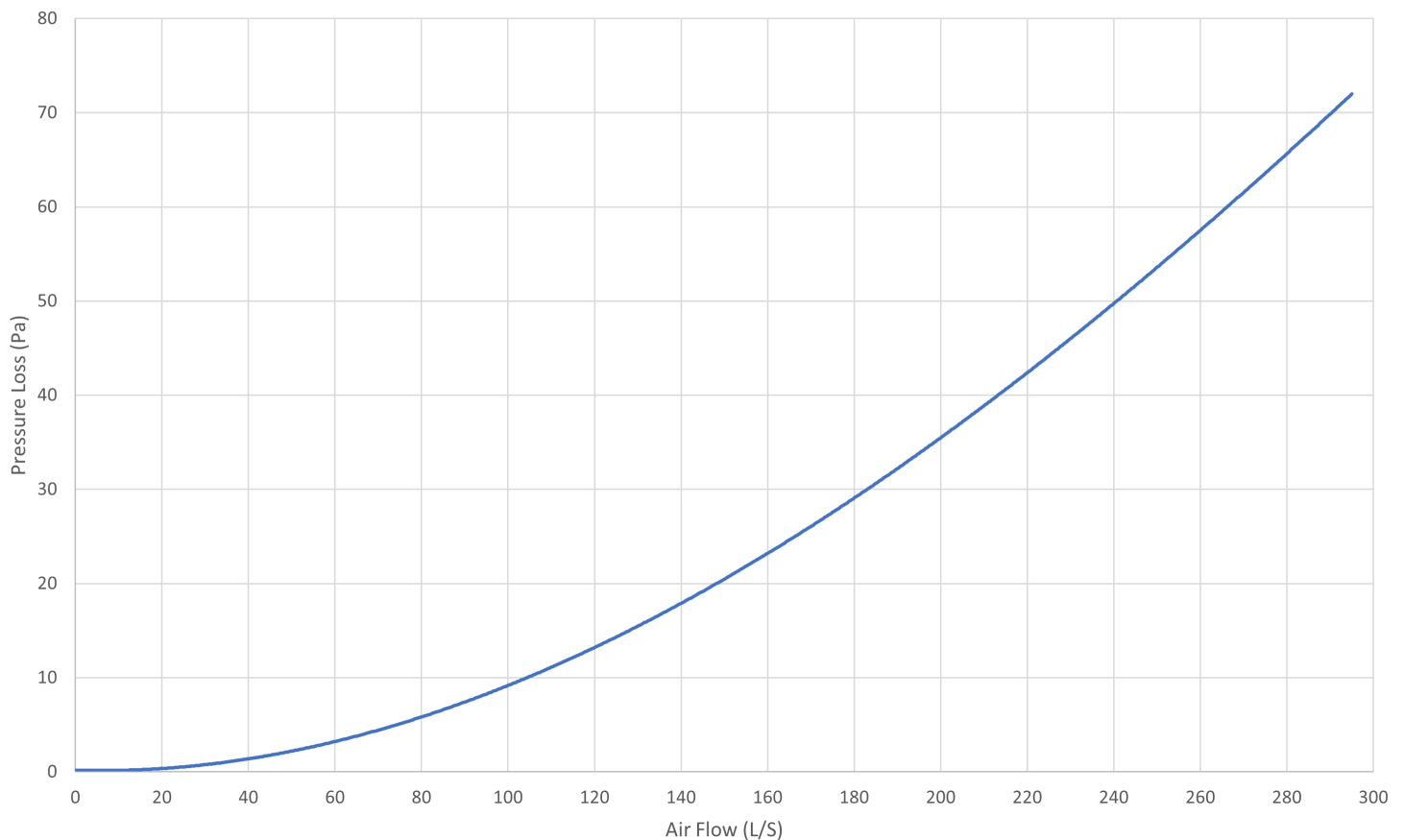
VENTÜER TECHNICAL DATA SHEET

The Ventüer aluminium ventilation cowl with insect mesh is designed for use as either an intake or exhaust façade vent. Constructed from high quality marine-grade powdercoated aluminium and fitted with a compressible EDPM foam rubber backing seal that provides excellent weather protection.

Available in multiple sizes and colours.



Airflow Performance - 200mm Aluminium Cowl with Insect Mesh



Ventilation Cowl

200mm Aluminium
with Insect Mesh



VENTÜER
High-Performance Building Ventilation

P: +64 9 973 3616
W: ventuer.co.nz
© 2019 All rights reserved

Scale:

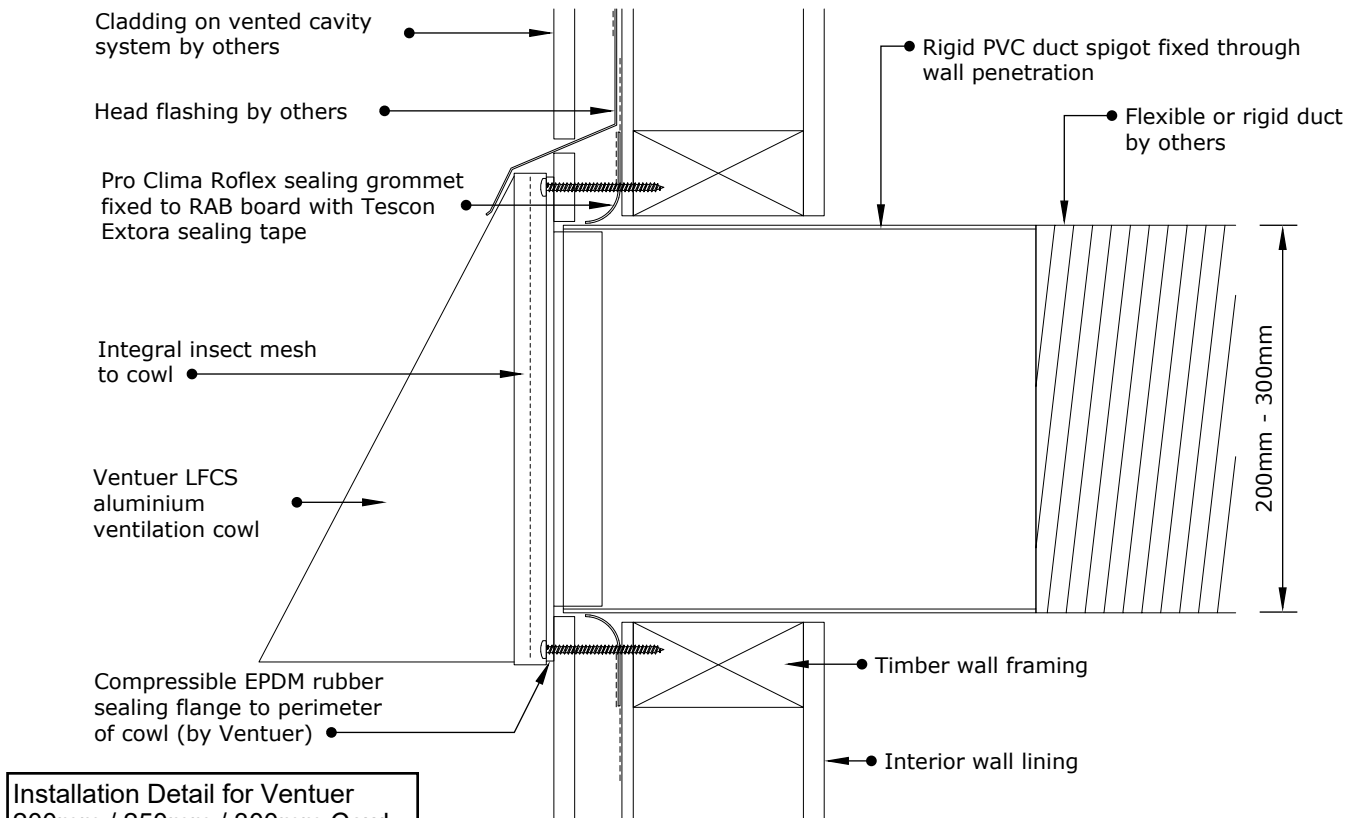
Date:

NTS
25/09/2023

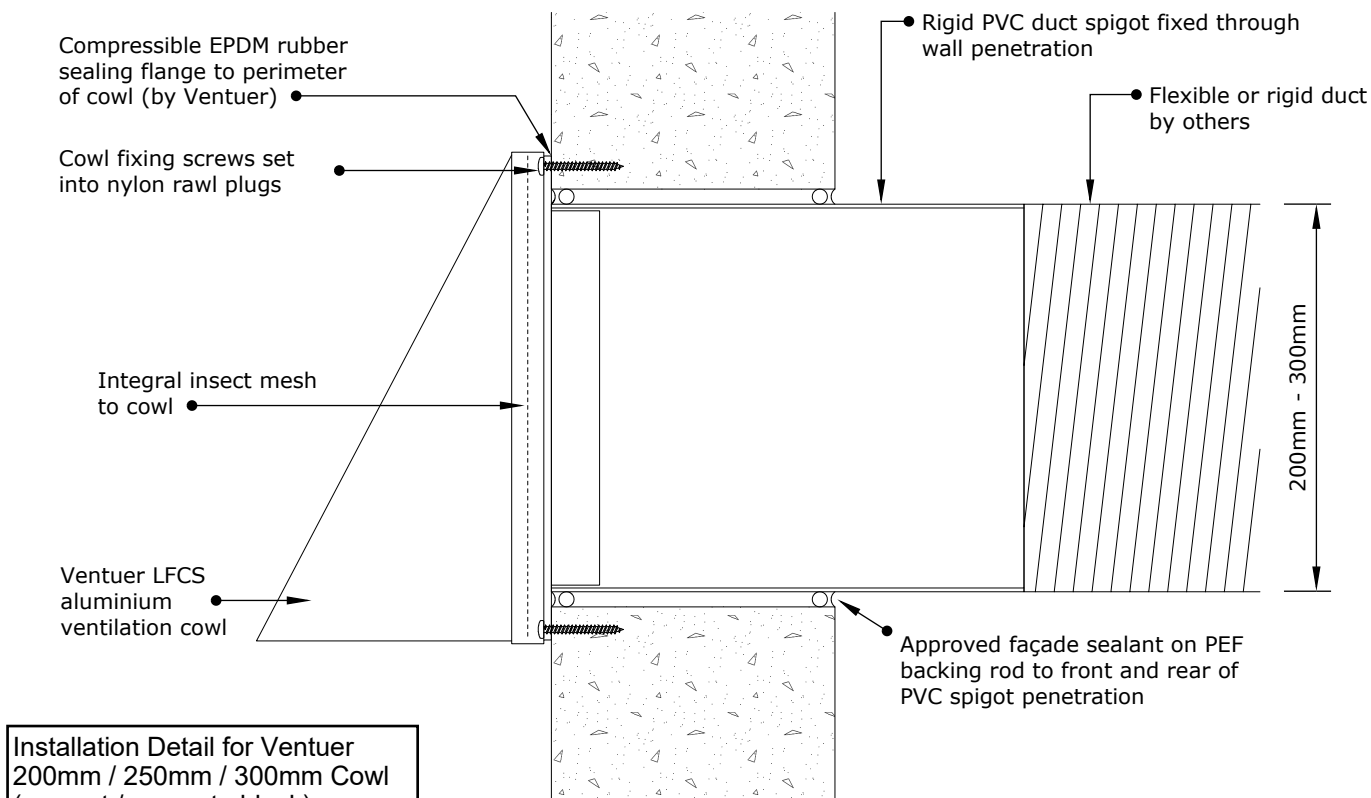
LFCAM-200

Ver.1

VENTÜER TECHNICAL DATA SHEET



Installation Detail for Ventuer 200mm / 250mm / 300mm Cowl (cladding over drained cavity)



Installation Detail for Ventuer 200mm / 250mm / 300mm Cowl (precast / concrete block)

Ventilation Cowl (200/250/300mm) Installation Details



VENTÜER
High-Performance Building Ventilation

P: +64 9 973 3616
W: ventuer.co.nz
© 2019 All rights reserved

Scale:
Date:

NTS
25/10/2019

LFCS

Ver.1